



**RUST
BUSTER**
FRAMEWORKS

RB4071L & RB4071R

Jeep® TJ Wrangler

Front Frame Section W/O Trailing Arm Mount



REQUIRED TOOLS

Jack Stands or Lift
Mig Welder
Paint/Primer
Locking Pliers
Hand Grinder
Cutting Wheel or Torch
Welding Gloves
Welding Hood/Shield
Ear & Eye Protection
Sockets & Ratchet
Fire Extinguisher
Large C-Clamps
Dead Blow Hammer
Body Clip Removal Tool

KIT CONTAINS

Front Frame Section

QTY

1



**RUST
BUSTER**
FRAMEWORKS

RB4071L & RB4071R

Jeep® TJ Wrangler

Front Frame Section W/O Trailing Arm Mount

1) PREPARING YOUR VEHICLE

Begin by disconnecting your battery prior to starting your installation.

Inspect your vehicle for leaking fuel lines, fuel tank and engine components. If you have fuel leaks repair all leaks prior to starting your installation. If your fuel tank is near your welding area **remove your tank prior to welding.**

Remove all combustible items above the work area such as seats, carpets, padding, etc.

Keep all flammable materials away from the vehicle work area.

2) PREPARING YOUR WORKSTATION

Keep a fire extinguisher close by in the case of fire and make sure you always have a designated "Fire Watch" to assist during the cutting or welding phases.

Abide by all apprenticed welding safety standards and practices.

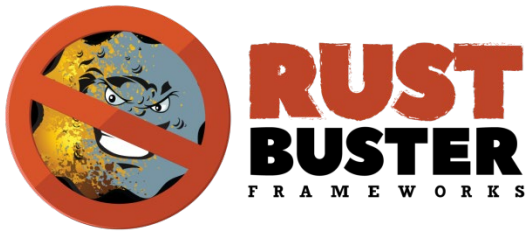
Always use appropriate welding eye protection, ear protection, and work and fire safety gloves during the installation and within the work area.



WARNING!

If you are unsure on how to perform the installation or how to operate any of the required tools listed above, it is **HIGHLY** advised that you enlist the work of a certified welder/installer.

Failure to follow proper safety precautions and instructions may result in serious injury. **The user assumes all liability when installing the product.**



RB4071L & RB4071R

Jeep® TJ Wrangler

Front Frame Section W/O Trailing Arm Mount

3) PREPARING FOR YOUR INSTALL

Lift your vehicle.

Remove the front wheel and set it out of the way.

Support your front axle using two jack stands for the passenger side and the pinion yoke to prevent axle roll.



Remove back three clips holding the inner fender liner on, using a body clip removal tool. Fold the inner fender liner out of your way.

Remove the bolt that holds the brake line bracket to the frame using a T40 Torx bit socket.



While using a tape measure, measure 1.5 inches from the top of the frame rail. Mark along the top of the frame from the front body mount bracket to the frame hole using a paint marker.



Repeat previous steps on inside of the frame rail.



Depending on how you intend to cut, clean the cut zones free of rust and down to bare metal.



RB4071L & RB4071R

Jeep® TJ Wrangler

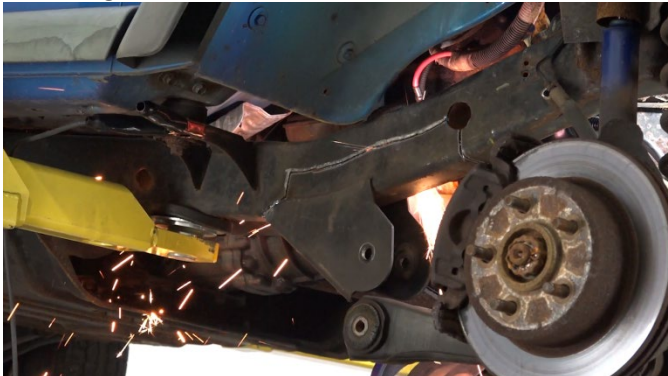
Front Frame Section W/O Trailing Arm Mount

4) CUT

Begin cutting away the upper control arm mount from inside the frame rail.



Cut along the drawn lines.



5) TEST FIT PART

Attempt to push the part into place and over the frame rails. Take note of any difficulties and cut away any obstructions.

Please be advised that these instructions were prepared based on the installation of RB4011 TJ Front Trailing Arm Section. Your purchase does not include the trailing arm mount. Nevertheless, the installation procedure remains unchanged.



The part may fit snugly and require force. Ensure the frame rail is flush and part starts just before the front body mount for approximately 16 inches.



**RUST
BUSTER**
FRAMEWORKS

RB4071L & RB4071R

Jeep® TJ Wrangler

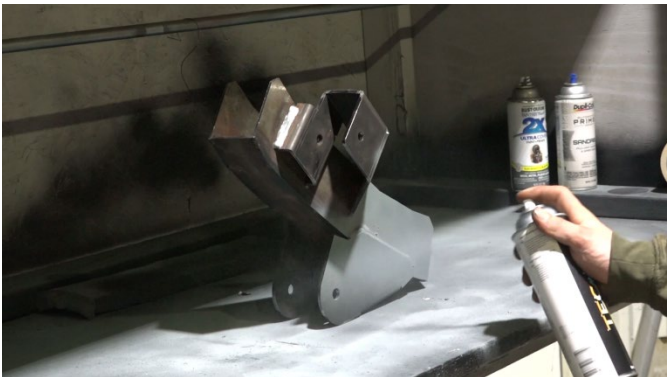
Front Frame Section W/O Trailing Arm Mount



NOTE: If other frame repair components have been installed previously, additional modifications to the frame may be required.

6) **WELDING PREP**

Once the part has been fitted, prepare your weld zones by clearing away any rust or debris, revealing bare metal.



Coat the part with a weld-able primer or other rust inhibitor to help prevent or reduce the risk of rust formation.

Replace the part and C-clamp and tack weld it into place to prevent it from moving later.

7) **WELD**

Remove any remaining potential fire hazards on both the vehicle and surrounding area. Following proper welding procedures begin welding the part onto the frame rails.

100% weld around all edges.





**RUST
BUSTER**
FRAMEWORKS

RB4071L & RB4071R

Jeep® TJ Wrangler

Front Frame Section W/O Trailing Arm Mount

8) PAINT AND PROTECT

If you chose not to protect your frame section in (Step 6), coat the part and work area with a primer or other rust inhibitor to help prevent or reduce the risk of rust formation.

9) REASSEMBLE VEHICLE

Begin reassembling your vehicle by starting with your Long Arm Lift Kit by following the manufacturer's instructions.

Reinstall your brake line bracket.

Reinstall your wheel.

Reconnect your battery.