



RUST BUSTER

RB7014L & RB7014R
Leaf Spring Frame Section
2009-2014 Ford F-150

Super Cab – 6.5ft. Bed / Super Crew Cab – 5.5ft. Bed



Driver – RB7014L



Passenger – RB7014R

REQUIRED TOOLS

Jack Stands or Lift
Mig Welder
Paint/Primer
Hand Grinder
Cutting Wheel or Torch
Welding Gloves
Welding Hood/Shield
Ear & Eye Protection
Sockets & Wrench
Fire Extinguisher
C-Clamps
Hammer
Punch
Wrench

KIT CONTAINS

Leaf Spring Frame Section
M18 Washer
M18 Hex Head Screw
M18 Locknut

QTY

1
1
1
1



RUST BUSTER

RB7014L & RB7014R Leaf Spring Frame Section 2009-2014 Ford F-150

Super Cab – 6.5ft. Bed / Super Crew Cab – 5.5ft. Bed

1) PREPARING YOUR VEHICLE

Begin by disconnecting your battery prior to starting your installation.

Inspect your vehicle for leaking fuel lines, fuel tank and engine components. If you have fuel leaks repair all leaks prior to starting your installation. If your fuel tank is near your welding area **remove your tank prior to welding.**

Remove all combustible items above the work area such as seats, carpets, padding, etc.

Keep all flammable materials away from the vehicle work area.

2) PREPARING YOUR WORKSTATION

Keep a fire extinguisher close by in the case of fire and make sure you always have a designated “Fire Watch” to assist during the cutting or welding phases.

Abide by all apprenticed welding safety standards and practices.

Always use appropriate welding eye protection, ear protection, and work and fire safety gloves during the installation and within the work area.



WARNING!

If you are unsure on how to perform the installation or how to operate any of the required tools listed above, it is **HIGHLY** advised that you enlist the work of a certified welder/installer.

Failure to follow proper safety precautions and instructions may result in serious injury. **The user assumes all liability when installing the product.**



RUST BUSTER

RB7014L & RB7014R Leaf Spring Frame Section 2009-2014 Ford F-150

Super Cab – 6.5ft. Bed / Super Crew Cab – 5.5ft. Bed

3) PREPARING FOR YOUR INSTALL

Lift or remove the cab from your frame. Remove or protect any fuel lines, brake lines, and wiring harnesses.

With a 27mm socket, remove the bolt retaining your leaf spring.

4) CUT

Cut off your leaf spring bracket and any obstructions in the work area.



After removing your bracket, we will need to cut and remove the bottom section of your frame rail where your frame section will sit. To do this, hold your leaf spring frame section up to the frame and mark off its coverage. Then, cut approximately half of an inch off the bottom of the frame.



Grind the frame free of rust and debris, revealing bare metal.



Spray the work area with a weld-through primer to help prevent against rust development.





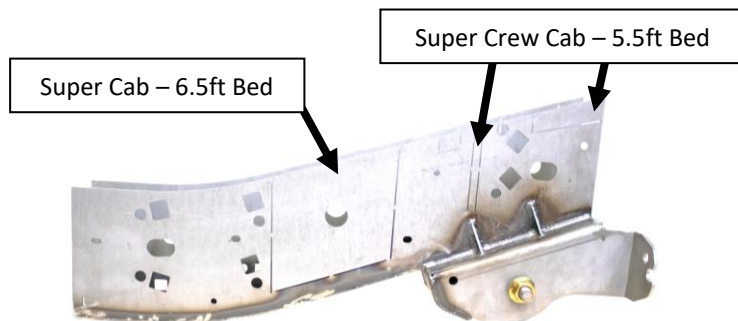
RUST BUSTER

RB7014L & RB7014R Leaf Spring Frame Section 2009-2014 Ford F-150

Super Cab – 6.5ft. Bed / Super Crew Cab – 5.5ft. Bed

Our part features a perforated plate that you can remove to fit over your existing rear cab mount. If you decide to keep your mount, remove the perforated plate at this time. If not, cut off your existing mount.

NOTE: The plate you will need to remove will depend on your cab.



You can clamp your part into place with a c-clamp to ensure a tight fit.

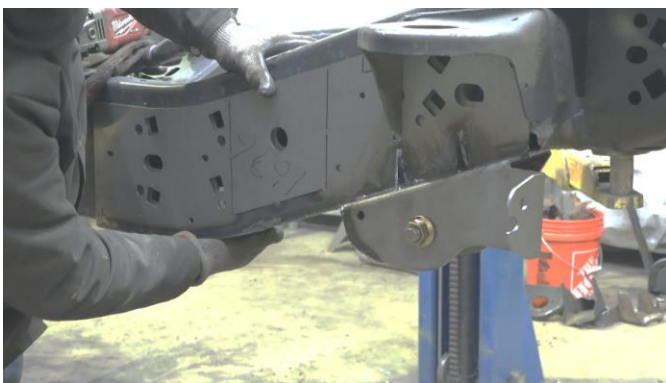


Following proper welding procedures, tack weld your leaf spring frame section onto the frame before welding it on fully



5) **WELD**

After removing the necessary plates, slide your leaf spring frame section onto the frame using the frame holes to help with the alignment. Tap it into place using a hammer.



6) **REINSTALL**

If you removed your rear cab mount, we show you how to reinstall it using our installation video on our YouTube channel:

Super Cab: RB7019L/R

Super Crew Cab: RB7031L/R

Reinstall your leaf spring using the provided hardware. Tighten it with a 27mm socket.



RUST BUSTER

**RB7014L & RB7014R
Leaf Spring Frame Section
2009-2014 Ford F-150**

Super Cab – 6.5ft. Bed / Super Crew Cab – 5.5ft. Bed

7) PAINT

Paint the part with primer or other rust inhibitor to help prevent or reduce the risk of rust formation.

We recommend our Rust Buster Rust Converter & Primer Spray Paint (RB9917).

