



# RUST BUSTER

**RB7123L & RB7123R**  
**Rear Cab Mount**  
**1995-2004 Toyota Tacoma**



**VIDEO AVAILABLE**



#### **REQUIRED TOOLS**

Jack Stands or Lift  
Mig Welder  
Paint/Primer  
Hand Grinder  
Cutting Wheel or Torch  
Welding Gloves  
Welding Hood/Shield  
Ear & Eye Protection  
Sockets & Ratchet  
Fire Extinguisher  
Paint Marker

#### **KIT CONTAINS**

Rear Cab Mount  
M10 Flanged Hex Screw

#### **QTY**

1  
2



# RUST BUSTER

## RB7123L & RB7123R Rear Cab Mount 1995-2004 Toyota Tacoma

### 1) **PREPARING YOUR VEHICLE**

Begin by disconnecting your battery prior to starting your installation.

Inspect your vehicle for leaking fuel lines, fuel tank and engine components. If you have fuel leaks repair all leaks prior to starting your installation. If your fuel tank is near your welding area **remove your tank prior to welding.**

Remove all combustible items above the work area such as seats, carpets, padding, etc.

**Keep all flammable materials away from the vehicle work area.**

### 2) **PREPARING YOUR WORKSTATION**

Keep a fire extinguisher close by in the case of fire and make sure you always have a designated "Fire Watch" to assist during the cutting or welding phases.

Abide by all apprenticed welding safety standards and practices.

Always use appropriate welding eye protection, ear protection, and work and fire safety gloves during the installation and within the work area.



### **WARNING!**

If you are unsure on how to perform the installation or how to operate any of the required tools listed above, it is **HIGHLY** advised that you enlist the work of a certified welder/installer.

Failure to follow proper safety precautions and instructions may result in serious injury. **The user assumes all liability when installing the product.**



# RUST BUSTER

## RB7123L & RB7123R Rear Cab Mount 1995-2004 Toyota Tacoma

### 3) **PREPARING FOR YOUR INSTALL**

Jack up your vehicle. With a 13mm socket, remove your body mount bolt and bushing.

### 4) **CUT**

Cut off the factory rear cab mount.



Grind the frame free of rust and debris, revealing bare metal.



Spray the work area with a weldable primer to help prevent against rust development.



Using the silhouette where the factory body mount was originally located, hold the part up to the frame and mark off its coverage using a paint marker.



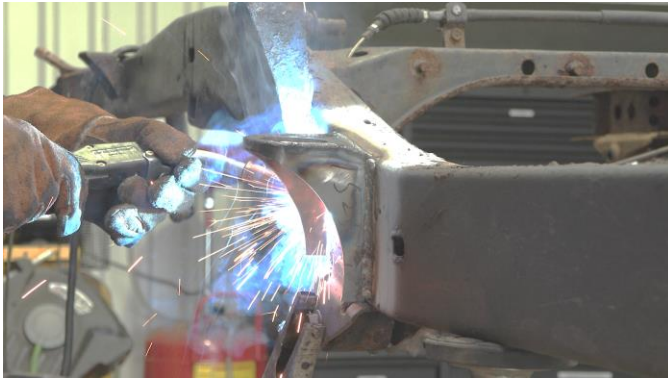


# RUST BUSTER

## RB7123L & RB7123R Rear Cab Mount 1995-2004 Toyota Tacoma

### 5) **WELD**

Following proper welding procedures, weld the rear cab mount onto the frame before welding it on fully. Weld 100% around all edges.



### 7) **REINSTALL**

Using a 13mm socket, reinstall your body mount and bushing.



### 6) **PAINT**

Paint the part with primer or other rust inhibitor to help prevent or reduce the risk of rust formation.

We recommend our Rust Buster Rust Converter & Primer Spray Paint (RB9917).

