



RUST BUSTER

RB7374 Spare Tire Crossmember 1981-1987 Chevy C/K10



REQUIRED TOOLS

Jack Stands or Lift
Paint/Primer
Hand Grinder
Cutting Wheel or Torch
Welding Gloves
Welding Hood/Shield
Ear & Eye Protection
Socket, Ratchet & Wrench
Fire Extinguisher
Hole Punch
Hammer

KIT CONTAINS

Spare Tire Crossmember
M10 Flanged Hex Screw
M10 Nylon-Insert Flange Lockout

QTY

1
8
8



RUST BUSTER

RB7374

**Spare Tire Crossmember
1981-1987 Chevy C/K10**

1) PREPARING YOUR VEHICLE

Begin by disconnecting your battery prior to starting your installation.

Inspect your vehicle for leaking fuel lines, fuel tank and engine components. If you have fuel leaks repair all leaks prior to starting your installation. If your fuel tank is near your welding area **remove your tank prior to welding.**

Remove all combustible items above the work area such as seats, carpets, padding, etc.

Keep all flammable materials away from the vehicle work area.

2) PREPARING YOUR WORKSTATION

Keep a fire extinguisher close by in the case of fire and make sure you always have a designated "Fire Watch" to assist during the cutting or welding phases.

Abide by all apprenticed welding safety standards and practices.

Always use appropriate welding eye protection, ear protection, and work and fire safety gloves during the installation and within the work area.



WARNING!

If you are unsure on how to perform the installation or how to operate any of the required tools listed above, it is **HIGHLY** advised that you enlist the work of a certified welder/installer.

Failure to follow proper safety precautions and instructions may result in serious injury. **The user assumes all liability when installing the product.**



RUST BUSTER

RB7374 Spare Tire Crossmember 1981-1987 Chevy C/K10

3) PREPARING FOR YOUR INSTALL

Lift up your vehicle. Remove any lines or power harnesses in the work area.

4) CUT

Punch out the eight rivets retaining the factory spare tire crossmember. These will be located on the top and bottom of your frame rail.

Remove the factory spare tire crossmember



Grind the frame free of rust and debris, revealing bare metal.

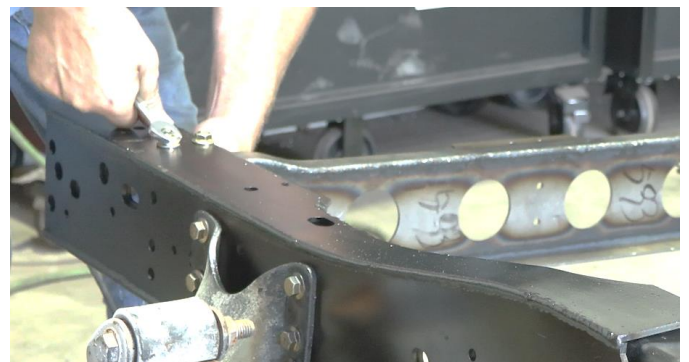
Spray the work area with a weldable primer to help prevent against rust development.

5) INSTALL

Slide your replacement spare tire crossmember onto the frame and tap it into place using a hammer. Use the frame holes to help with the alignment.



Once in place, use a 14mm socket and 15mm wrench to screw in the included M10 hardware on the top and bottom of your frame rail.





RUST BUSTER

RB7374 Spare Tire Crossmember 1981-1987 Chevy C/K10

6) **PAINT**

Paint the part with primer or other rust inhibitor to help prevent or reduce the risk of rust formation.

We recommend our Rust Buster Rust Converter & Primer Spray Paint (RB9917).

