



RUST BUSTER

RB7407 Track Bar Bracket

2002-2013 Chevy Avalanche 1500, 2000-2014 Chevy
Suburban, 2000-2014 GMC Yukon XL, 2002-2013
Escalade EXT, 2003-2014 Escalade ESV



VIDEO AVAILABLE

REQUIRED TOOLS

Jack Stands or Lift
Mig Welder
Paint/Primer
Hand Grinder
Cutting Wheel or Torch
Welding Gloves
Welding Hood/Shield
Ear & Eye Protection
Sockets & Ratchet
Fire Extinguisher

KIT CONTAINS

Track Bar Bracket

QTY

1



RUST BUSTER

RB7407
Track Bar Bracket

**2002-2013 Chevy Avalanche 1500, 2000-2014 Chevy
Suburban, 2000-2014 GMC Yukon XL, 2002-2013
Escalade EXT, 2003-2014 Escalade ESV**

1) PREPARING YOUR VEHICLE

Begin by disconnecting your battery prior to starting your installation.

Inspect your vehicle for leaking fuel lines, fuel tank and engine components. If you have fuel leaks repair all leaks prior to starting your installation. If your fuel tank is near your welding area **remove your tank prior to welding.**

Remove all combustible items above the work area such as seats, carpets, padding, etc.

Keep all flammable materials away from the vehicle work area.

2) PREPARING YOUR WORKSTATION

Keep a fire extinguisher close by in the case of fire and make sure you always have a designated "Fire Watch" to assist during the cutting or welding phases.

Abide by all apprenticed welding safety standards and practices.

Always use appropriate welding eye protection, ear protection, and work and fire safety gloves during the installation and within the work area.



WARNING!

If you are unsure on how to perform the installation or how to operate any of the required tools listed above, it is **HIGHLY** advised that you enlist the work of a certified welder/installer.

Failure to follow proper safety precautions and instructions may result in serious injury. **The user assumes all liability when installing the product.**



RUST BUSTER

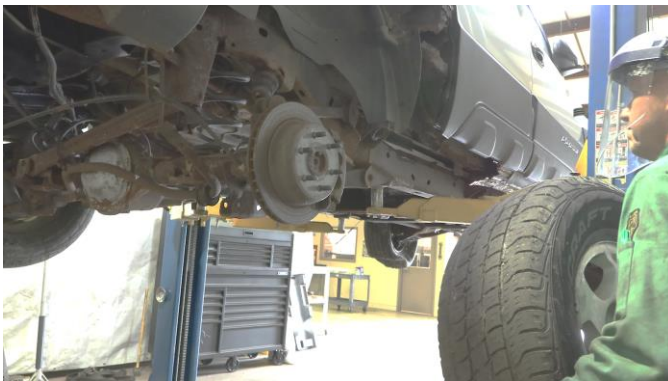
RB7407 Track Bar Bracket

2002-2013 Chevy Avalanche 1500, 2000-2014 Chevy Suburban, 2000-2014 GMC Yukon XL, 2002-2013 Escalade EXT, 2003-2014 Escalade ESV

3) PREPARING FOR YOUR INSTALL

Remove any lines or power harnesses from the work area. Lift up your vehicle.

With a 22mm socket, remove your wheel.



With a 21mm socket and wrench, remove the bolt securing your track bar and push it down and out of the way.



4) CUT

Cut out the factory track bar bracket as well as any obstructions in your work area.





RUST BUSTER

RB7407 Track Bar Bracket

2002-2013 Chevy Avalanche 1500, 2000-2014 Chevy Suburban, 2000-2014 GMC Yukon XL, 2002-2013 Escalade EXT, 2003-2014 Escalade ESV

Grind the frame free of rust and debris, revealing bare metal.

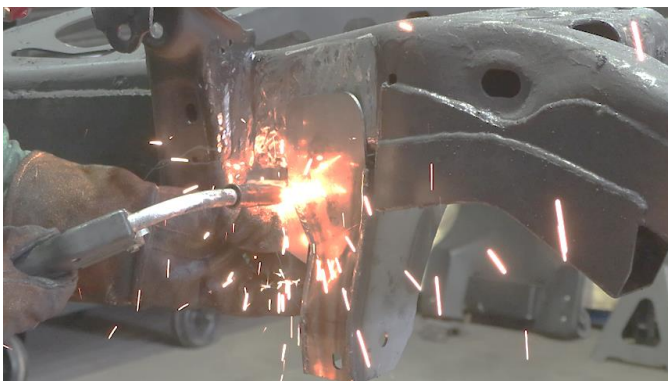
Paint the work area with a weld through primer to help prevent against rust development.

5) **WELD**

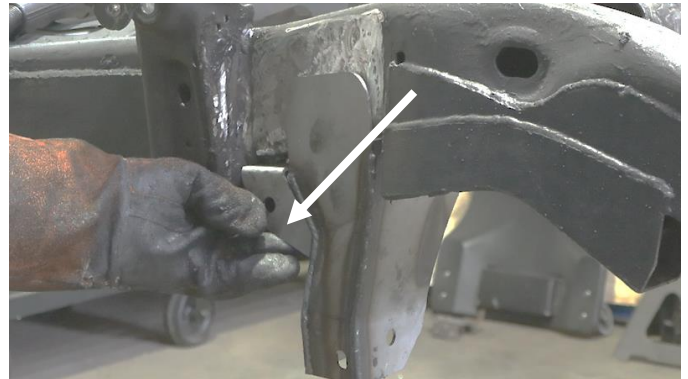
Hold the track bar bracket up to the frame.



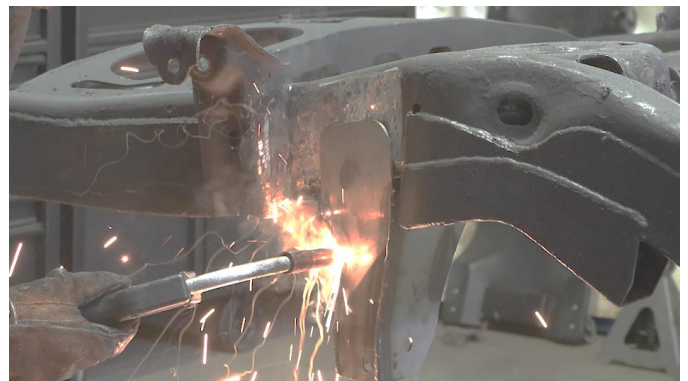
Following proper welding procedure, tack weld the track bar bracket onto the frame.



Once in place, hold the included support bracket up to the frame and make sure it aligns correctly.



Once aligned, tack weld the support bracket to the track bar bracket before welding the parts on fully. Weld 100% around all edges.





RUST BUSTER

RB7407 Track Bar Bracket

2002-2013 Chevy Avalanche 1500, 2000-2014 Chevy
Suburban, 2000-2014 GMC Yukon XL, 2002-2013
Escalade EXT, 2003-2014 Escalade ESV

6) PAINT AND PROTECT

Paint the part with primer or other rust inhibitor to help prevent or reduce the risk of rust formation.

We recommend our Rust Buster Rust Converter & Primer Spray Paint (RB9917).



7) REINSTALL

With a 21mm socket, reinstall your track bar.

With a 22mm socket, reinstall your wheel.