



RUST BUSTER

RB7603L
Leaf Spring Frame Section
1994-2004 Chevy S10 &
1994-2004 GMC Sonoma



VIDEO AVAILABLE



REQUIRED TOOLS

Jack Stands or Lift
Mig Welder
Paint/Primer
Hand Grinder
Cutting Wheel or Torch
Welding Gloves
Welding Hood/Shield
Ear & Eye Protection
Sockets & Ratchet
Fire Extinguisher
Hammer
Pliers

KIT CONTAINS

Leaf Spring Frame Section
Support Plate
M14 Flanged Hex Head Screw
M14 Flanged Head Locknut

QTY

1
1
1
1



RUST BUSTER

RB7603L Leaf Spring Frame Section 1994-2004 Chevy S10 & 1994-2004 GMC Sonoma

1) PREPARING YOUR VEHICLE

Begin by disconnecting your battery prior to starting your installation.

Inspect your vehicle for leaking fuel lines, fuel tank and engine components. If you have fuel leaks repair all leaks prior to starting your installation. If your fuel tank is near your welding area **remove your tank prior to welding.**

Remove all combustible items above the work area such as seats, carpets, padding, etc.

Keep all flammable materials away from the vehicle work area.

2) PREPARING YOUR WORKSTATION

Keep a fire extinguisher close by in the case of fire and make sure you always have a designated "Fire Watch" to assist during the cutting or welding phases.

Abide by all apprenticed welding safety standards and practices.

Always use appropriate welding eye protection, ear protection, and work and fire safety gloves during the installation and within the work area.



WARNING!

If you are unsure on how to perform the installation or how to operate any of the required tools listed above, it is **HIGHLY** advised that you enlist the work of a certified welder/installer.

Failure to follow proper safety precautions and instructions may result in serious injury. **The user assumes all liability when installing the product.**



RUST BUSTER

RB7603L Leaf Spring Frame Section 1994-2004 Chevy S10 & 1994-2004 GMC Sonoma

3) PREPARING FOR YOUR INSTALL

Lift up your vehicle.

Remove your fuel tank, and any lines or power harnesses in the work area.

Remove the bolts and nuts retaining the fuel tank support bracket with a 15mm socket.



With an 18mm socket, remove the bolt retaining the leaf spring.



4) CUT

Hold the part up to the frame and mark off its coverage. Cut off your bed mount, cab mount, and leaf spring bracket.



Grind down the frame free of rust and debris, revealing bare metal.





RUST BUSTER

RB7603L

Leaf Spring Frame Section 1994-2004 Chevy S10 & 1994-2004 GMC Sonoma

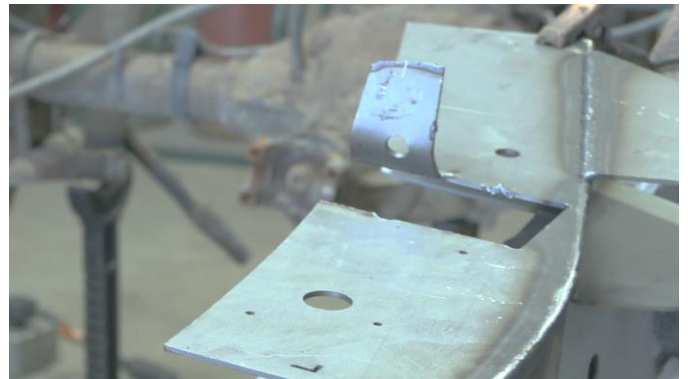
Paint the part with a weld through primer to help prevent against rust development.



Our part features a perforated plate that can be removed to fit over your brake line bracket. To do this, cut out the square perforated plate. (Cutting the plate out retains the factory bracket).



Then, we'll need to bend over the top section so we can slide our part onto the frame. Cut one side of the top section and bend it over with pliers.



5) **REINSTALL**

Slide your leaf spring frame section onto the frame using the holes to help with the alignment.





RUST BUSTER

RB7603L Leaf Spring Frame Section 1994-2004 Chevy S10 & 1994-2004 GMC Sonoma

Hold up the support plate and use a 15mm socket to screw the 4 bolts into place.



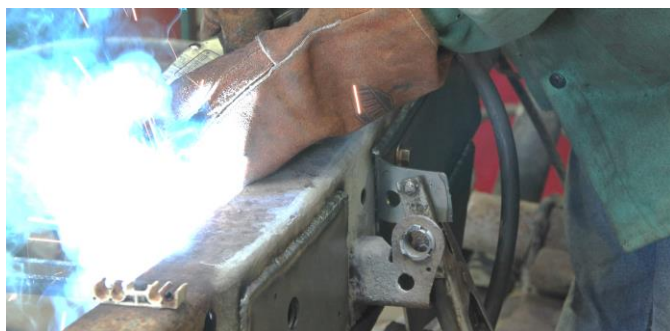
Hold the fuel tank bracket up to the frame and using a 15mm socket, screw the 4 nuts into place.



Bend the top section back into place.

6) WELD

Following proper welding procedures, tack weld the frame section into place before tack welding on the support plate. Then, weld the parts on fully. Weld 100% around all edges.



7) PAINT AND PROTECT

Coat the part and work area with a primer or other rust inhibitor to help prevent or reduce the risk of rust formation.



8) REINSTALL

Weld on your bed mount, cab mount, and leaf spring bracket.

Reinstall your fuel tank support bracket with a 15mm socket, leaf spring with an 18mm socket, and your fuel tank.