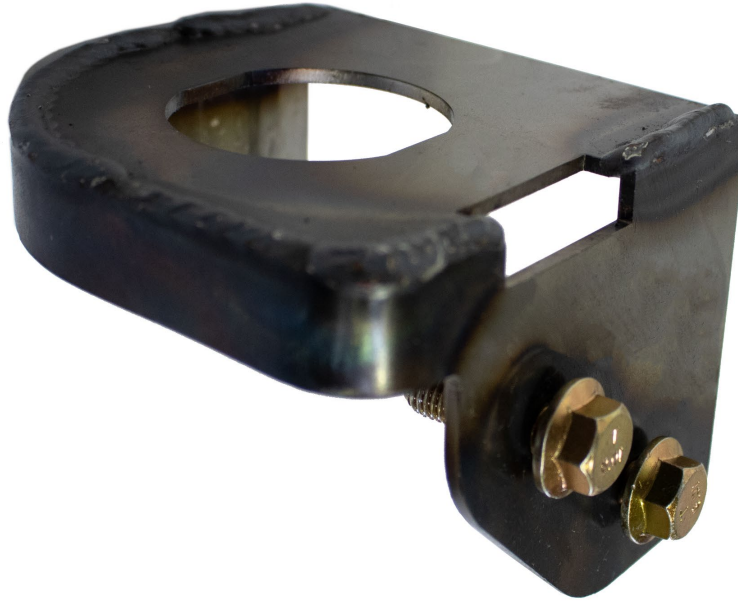




# RUST BUSTER

**RB7618R & RB7618L**  
1994-2004 Chevy/GMC S10 & Sonoma  
Core Support Mount



#### REQUIRED TOOLS

Jack Stands or Lift  
Mig Welder  
Paint/Primer  
Hand Grinder  
Cutting Wheel or Torch  
Welding Gloves  
Welding Hood/Shield  
Ear & Eye Protection  
Sockets & Ratchet  
Fire Extinguisher  
Paint Marker

#### KIT CONTAINS

Core Support Mount  
M10x1.5x30mm Hex Bolt

#### QTY

1  
2



# RUST BUSTER

**RB7618R & RB7618L**  
**1994-2004 Chevy/GMC S10 & Sonoma**  
**Core Support Mount**

## 1) **PREPARING YOUR VEHICLE**

Begin by disconnecting your battery prior to starting your installation.

Inspect your vehicle for leaking fuel lines, fuel tank and engine components. If you have fuel leaks repair all leaks prior to starting your installation. If your fuel tank is near your welding area **remove your tank prior to welding.**

Remove all combustible items above the work area such as seats, carpets, padding, etc.

**Keep all flammable materials away from the vehicle work area.**

## 2) **PREPARING YOUR WORKSTATION**

Keep a fire extinguisher close by in the case of fire and make sure you always have a designated "Fire Watch" to assist during the cutting or welding phases.

Abide by all apprenticed welding safety standards and practices.

Always use appropriate welding eye protection, ear protection, and work and fire safety gloves during the installation and within the work area.



### **WARNING!**

If you are unsure on how to perform the installation or how to operate any of the required tools listed above, it is **HIGHLY** advised that you enlist the work of a certified welder/installer.

Failure to follow proper safety precautions and instructions may result in serious injury. **The user assumes all liability when installing the product.**



# RUST BUSTER

## RB7618R & RB7618L 1994-2004 Chevy/GMC S10 & Sonoma Core Support Mount

### 3) PREPARING FOR YOUR INSTALL

Remove any accessories and components that are at risk of being damaged during the installation.

Remove your vehicle's bumper and their mounting brackets attached to the factory mounts with a 14mm socket.

Remove the vehicle's factory core support mount bolt and bushing.

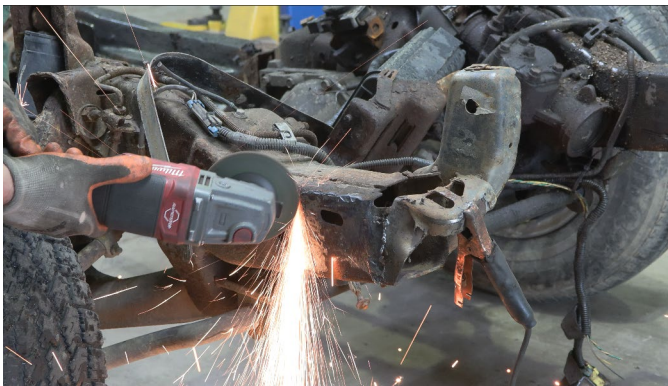


### 4) CUT

While taking care to not damage the vehicle's body, begin cutting away the bracket.



Grind the frame rail free of rust and debris, revealing bare metal.



Coat the work area with a weld through primer to help prevent against further rust development.

Use the remaining indent to mark off the install location to help with alignment.



### 5) WELD

Remove any potential fire hazards from the work area. Following proper welding procedures, tack weld the part on before welding it on. 100% weld around all edges.







# RUST BUSTER

**RB7618R & RB7618L**  
**1994-2004 Chevy/GMC S10 & Sonoma**  
**Core Support Mount**

**6) PAINT AND PROTECT**

Coat the part and work area with a primer or other rust inhibitor to help prevent or reduce the risk of rust formation.



**7) REINSTALL**

Reinstall the cab mount bolt and bushing.  
Reinstall your bumper with the included hardware with a 14mm socket.  
Reassemble your vehicle.