



RUST BUSTER

2001-2010 Chevy/GMC Silverado/Sierra 2500HD – Standard Cab – 8ft Bed

RB7810

Spare Tire Crossmember



VIDEO AVAILABLE



REQUIRED TOOLS

Jack Stands or Lift
Mig Welder
Paint/Primer
Hand Grinder
Cutting Wheel or Torch
Welding Gloves
Welding Hood/Shield
Ear & Eye Protection
Fire Extinguisher
C-Clamp

KIT CONTAINS

Spare Tire Crossmember
M10 Flanged Hex Bolt
M10 Flanged Lock Nut
M14 Flanged Hex Bolt
M14 Flanges Lock Nut
M14 Washer

QTY

1
16
16
1
1
1



RUST BUSTER

2001-2010 Chevy/GMC Silverado/Sierra 2500HD – Standard Cab – 8ft Bed

RB7810

Spare Tire Crossmember

1) **PREPARING YOUR VEHICLE**

Begin by disconnecting your battery prior to starting your installation.

Inspect your vehicle for leaking fuel lines, fuel tank and engine components. If you have fuel leaks repair all leaks prior to starting your installation. If your fuel tank is near your welding area **remove your tank prior to welding.**

Remove all combustible items above the work area such as seats, carpets, padding, etc.

Keep all flammable materials away from the vehicle work area.

2) **PREPARING YOUR WORKSTATION**

Keep a fire extinguisher close by in the case of fire and make sure you always have a designated “Fire Watch” to assist during the cutting or welding phases.

Abide by all apprenticed welding safety standards and practices.

Always use appropriate welding eye protection, ear protection, and work and fire safety gloves during the installation and within the work area.



WARNING!

If you are unsure on how to perform the installation or how to operate any of the required tools listed above, it is **HIGHLY** advised that you enlist the work of a certified welder/installer.

Failure to follow proper safety precautions and instructions may result in serious injury. **The user assumes all liability when installing the product.**



RUST BUSTER

2001-2010 Chevy/GMC Silverado/Sierra 2500HD – Standard Cab – 8ft Bed

RB7810

Spare Tire Crossmember

3) PREPARING FOR YOUR INSTALL

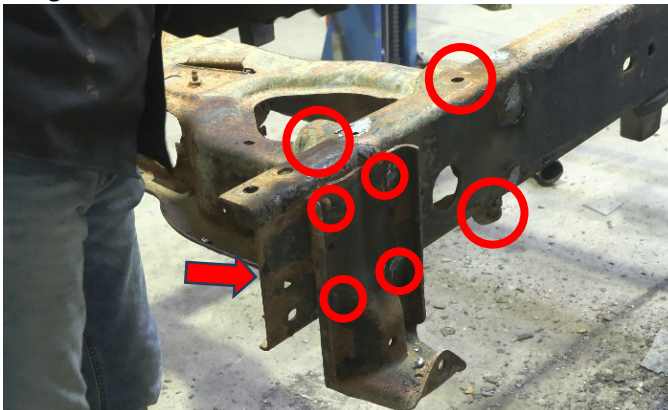
Move any lines and wire harnesses from the work area, remove your spare tire, and remove the vehicle's bed.



Remove your rear wheels, followed by unbolting the leaf spring from each rear hanger, and allowing them to drop away. You may need to lift the rear axle to relieve tension and help the spring detach.

4) CUT

Cut and punch out the 16 rivets (8 on each rail) retaining the crossmember and hanger to the frame: 4 on top, 4 on the bottom, and 4 from each spring hanger.



NOTE: We only include hardware to install your new spare tire crossmember. We do not supply additional hardware to resecure your leaf spring hanger. If you wish to reinstall your factory hanger, you will need to either supply additional M10 hardware, or purchase and install **Rust Buster's RB7801L/RB7801R Rear Frame Sections**.

Hammer the section out of the frame (cutting the section in half may make the process easier).



Grind the work area free of rust and debris, revealing bare metal, followed by coating the work area with a weld through primer to help prevent against further rust development.



RUST BUSTER

2001-2010 Chevy/GMC Silverado/Sierra 2500HD – Standard Cab – 8ft Bed

RB7810

Spare Tire Crossmember

5) INSTALL

Slide the new section in between the frame rails while using frame holes to help with alignment. Ensure the shown opening faces the rear of the vehicle.



Coat the part and work area with a primer or other rust inhibitor to help prevent or reduce the risk of rust formation.



We recommend our Rust Buster Rust Converter & Primer Spray Paint (RB9917).



Insert the included hardware and secure the sections and hangers with a 14mm socket and 15mm wrench.



Reinstall your spare tire.

Reinstall lines and wire harnesses.

Reinstall your bed.