

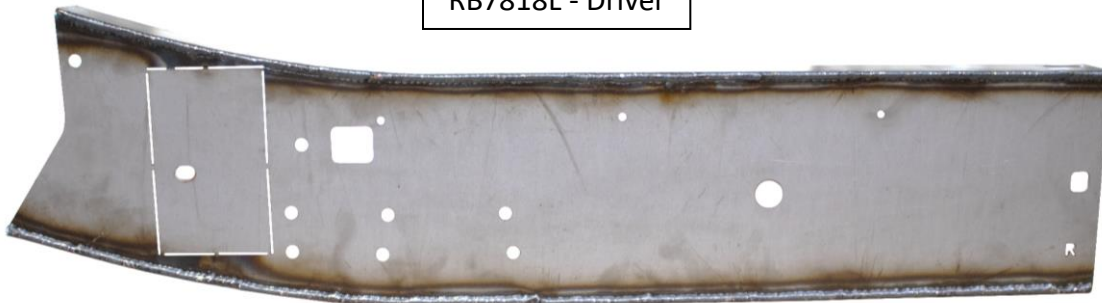


RUST BUSTER

RB7818L & RB7818R
Mid Frame Section
2001-2010 Chevy/GMC 2500HD
Standard Cab – 8ft. Bed



RB7818L - Driver



RB7818R - Passenger

REQUIRED TOOLS

Jack Stands or Lift
Mig Welder
Paint/Primer
Hand Grinder
Cutting Wheel or Torch
Welding Gloves
Welding Hood/Shield
Ear & Eye Protection
Sockets & Wrench
Fire Extinguisher
Punch
C-Clamps
Hammer

KIT CONTAINS

Mid Frame Section
Flanged Hex Screw
Flange Locknut

QTY

1
4
4



RUST BUSTER

RB7818L & RB7818R Mid Frame Section 2001-2010 Chevy/GMC 2500HD Standard Cab – 8ft. Bed

1) PREPARING YOUR VEHICLE

Begin by disconnecting your battery prior to starting your installation.

Inspect your vehicle for leaking fuel lines, fuel tank and engine components. If you have fuel leaks repair all leaks prior to starting your installation. If your fuel tank is near your welding area **remove your tank prior to welding.**

Remove all combustible items above the work area such as seats, carpets, padding, etc.

Keep all flammable materials away from the vehicle work area.

2) PREPARING YOUR WORKSTATION

Keep a fire extinguisher close by in the case of fire and make sure you always have a designated “Fire Watch” to assist during the cutting or welding phases.

Abide by all apprenticed welding safety standards and practices.

Always use appropriate welding eye protection, ear protection, and work and fire safety gloves during the installation and within the work area.



WARNING!

If you are unsure on how to perform the installation or how to operate any of the required tools listed above, it is **HIGHLY** advised that you enlist the work of a certified welder/installer.

Failure to follow proper safety precautions and instructions may result in serious injury. **The user assumes all liability when installing the product.**



RUST BUSTER

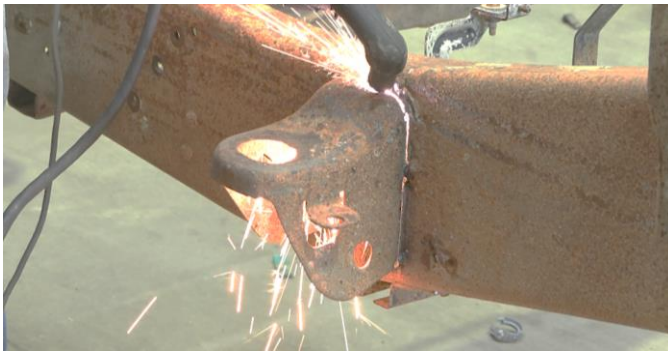
RB7818L & RB7818R Mid Frame Section 2001-2010 Chevy/GMC 2500HD Standard Cab – 8ft. Bed

3) PREPARING FOR YOUR INSTALL

Lift up your vehicle. Remove any lines or power harnesses in the work area.

4) CUT

Our part features a perforated plate that you can remove to fit over your existing front cab mount. If you decide to keep your middle cab mount, remove the plate at this time. If not, remove your middle cab mount and any obstructions in the work area.



With an 18mm socket and wrench, remove the hold down strap located under your middle cab mount and set it aside.



Cut out the rivets located next to your middle cab mount. Punch out the rivets using a punch.



Grind the frame free of rust and debris, revealing bare metal.





RUST BUSTER

RB7818L & RB7818R Mid Frame Section 2001-2010 Chevy/GMC 2500HD Standard Cab – 8ft. Bed

Spray the work area with a weld-through primer to help prevent against rust development.



Cut out the perforated plates located on the underside of your frame section to fit over your existing bracket and transmission crossmember.



Slide your mid frame section onto the frame and tap it into place with a hammer. Use the frame holes to help with the alignment. You can c-clamp your part into place to ensure a tight fit.



5) **WELD**

Following proper welding procedures, tac weld your mid frame section onto the frame before welding it on fully. Weld 100% around all edges.



6) **REINSTALL**

Before reinstalling your cab mount, reinstall your hold down strap with a 18mm socket and wrench.

Then, reinstall your middle cab mount (RB7325L/R) using the installation videos from our YouTube channel.

With a 15mm socket and wrench, install the included hardware where the rivets you removed were originally located.

7) **PAINT**

Paint the part with primer or other rust inhibitor to help prevent or reduce the risk of rust formation.

We recommend our Rust Buster Rust Converter & Primer Spray Paint (RB9917).