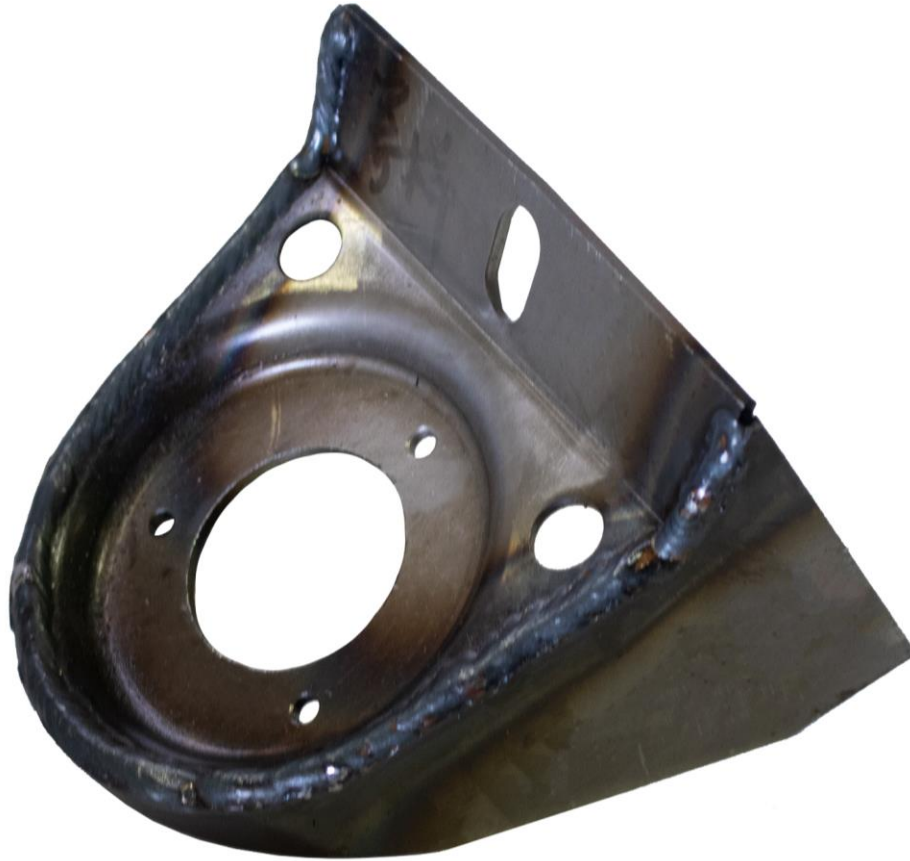




RUST BUSTER

RB8431
2003-2009 Toyota® 4Runner
2007-2014 Toyota® FJ Cruiser
Rear Body Mount



REQUIRED TOOLS

Jack Stands or Lift
Mig Welder
Paint/Primer
Hand Grinder
Cutting Wheel or Torch
Welding Gloves
Welding Hood/Shield
Ear & Eye Protection
Sockets & Ratchet
Fire Extinguisher
Tape Measure
Paint Marker

KIT CONTAINS

Rear Body Mount

QTY

1



RUST BUSTER

RB8431

**2003-2009 Toyota® 4Runner
2007-2014 Toyota® FJ Cruiser
Rear Body Mount**

1) PREPARING YOUR VEHICLE

Begin by disconnecting your battery prior to starting your installation.

Inspect your vehicle for leaking fuel lines, fuel tank and engine components. If you have fuel leaks repair all leaks prior to starting your installation. If your fuel tank is near your welding area **remove your tank prior to welding.**

Remove all combustible items above the work area such as seats, carpets, padding, etc.

Keep all flammable materials away from the vehicle work area.

2) PREPARING YOUR WORKSTATION

Keep a fire extinguisher close by in the case of fire and make sure you always have a designated "Fire Watch" to assist during the cutting or welding phases.

Abide by all apprenticed welding safety standards and practices.

Always use appropriate welding eye protection, ear protection, and work and fire safety gloves during the installation and within the work area.



WARNING!

If you are unsure on how to perform the installation or how to operate any of the required tools listed above, it is **HIGHLY** advised that you enlist the work of a certified welder/installer.

Failure to follow proper safety precautions and instructions may result in serious injury. **The user assumes all liability when installing the product.**



RUST BUSTER

RB8431

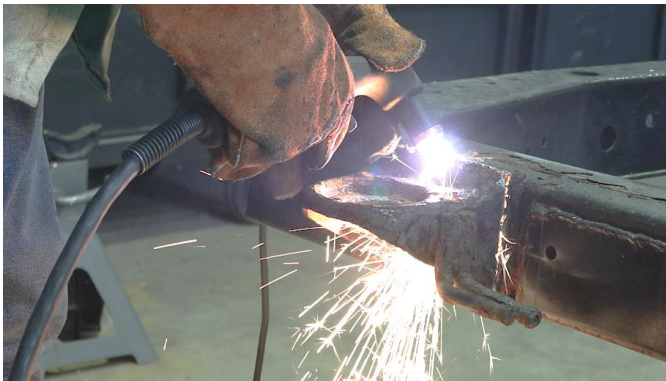
**2003-2009 Toyota® 4Runner
2007-2014 Toyota® FJ Cruiser
Rear Body Mount**

3) **PREPARING FOR YOUR INSTALL**

Remove the body mount bolt and bushing.

CUT

Cut off the factory body mount.



Grind down the frame free of rust and debris, revealing bare metal.



Paint the part and work area with a weldable primer to help prevent against rust.

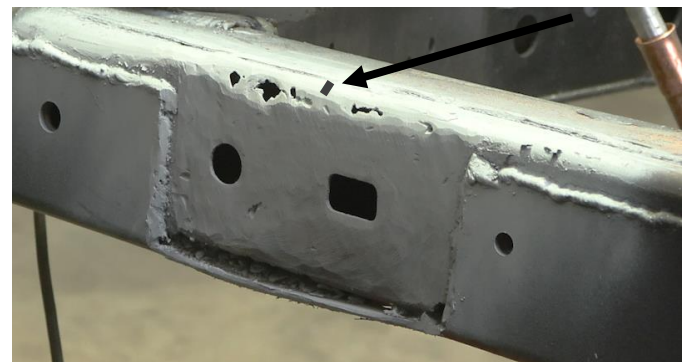


4) **MEASURE**

On the opposite side of your vehicle, use a tape measure to measure from the center of the slot to the end of the frame. It should equal 9 inches.



Using the measurements you took on the opposite side of the frame, mark where the center will be with a paint marker.



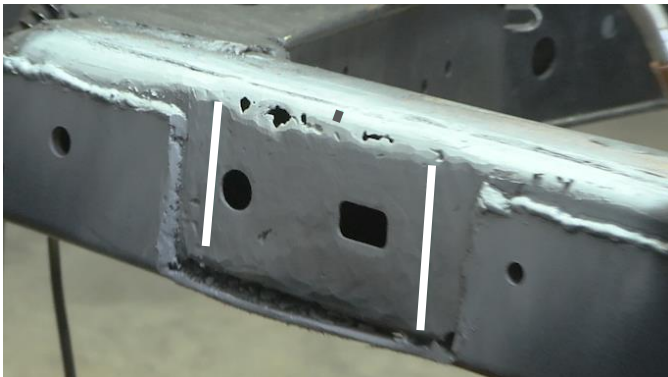


RUST BUSTER

RB8431

2003-2009 Toyota® 4Runner
2007-2014 Toyota® FJ Cruiser
Rear Body Mount

Hold the rear body mount up to the frame and line up the oval hole with the line. Then, mark the sides of the body mount.

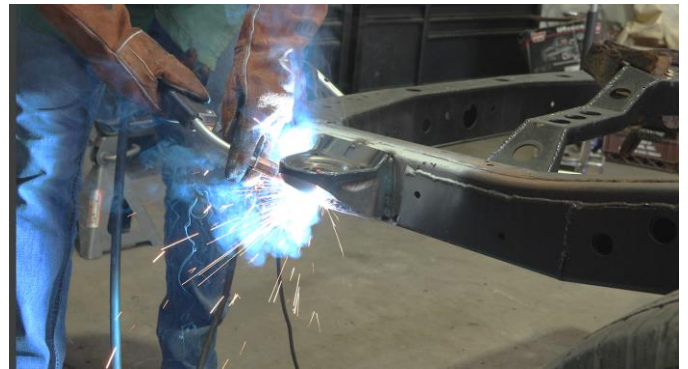


5) **WELD**

Line up the rear body mount with the markings making sure the top of the body mount lines up with the top of the frame.



Remove any potential fire hazards from the work area. Following proper welding procedures, tack weld the part onto the frame before welding the part on fully. Weld 100% around all edges.



6) **PAINT AND PROTECT**

Coat the part and work area with a primer or other rust inhibitor to help prevent or reduce the risk of rust formation.



7) **REINSTALL**

Reinstall the body mount bolt and bushing.